

Create a Carbon Offer - (CP-NZU)

Quick Reference Guide

When you have sent Carbon Units to the emsTradepoint escrow (see other Quick Reference Guide) you will be able to make offers on the exchange for one of the listed Carbon Products.

CP-NZU - An open product allowing trades of any size, from 1 NZU and beyond!

1

Start by selecting the type of product you wish to view by clicking the CP-NZU product.

After clicking on a product, the Market Depth panel will be displayed for that product in the centre panel on the trading board.


1


The screenshot shows a trading board interface with a dark theme. At the top, there are navigation tabs: Trading Board (selected), Orders, Trades, Scheduler, Market Data, Account, and Uat. The main area is divided into two panels. The left panel, titled 'Products', shows a list of carbon products with columns for (NZU) Sweep, (NZU) Bid Qty, (\$/NZU) Bid, (\$/NZU) Offer, (NZU) Offer Qty, (NZU) Sweep, and (\$/NZU) Last Deal. The 'CP-NZU' product is selected, and its details are shown in the right panel, titled 'Market depth'. The Market Depth panel displays the last trade price (79.00) and delta (3.50), along with high (85.70), low (36.20), VWAP (51.83), and volume (25,800). Below this, there are 'Bid Entry' and 'Offer Entry' buttons, and a table showing the order book with columns for (NZU) Sweep, (NZU) My Qty, (NZU) Qty, (\$/NZU) Bids, (\$/NZU) Offers, (NZU) Qty, (NZU) My Qty, and (NZU) Sweep.

(NZU) Sweep	(NZU) My Qty	(NZU) Qty	(\$/NZU) Bids	(\$/NZU) Offers	(NZU) Qty	(NZU) My Qty	(NZU) Sweep
700	-	700	85.70	85.20	2,000	-	2,000
1,600	-	900	83.70	86.80	500	-	2,500
2,600	-	1,000	76.70	88.30	1,000	-	3,500
2,900	-	300	61.90	89.60	1,000	-	4,500
4,900	-	2,000	57.00	92.40	1,000	-	5,500

- 2 Here is the name of the Carbon Product you are looking at.
- 3 These are the current live **Bids** (Buyers), shown from highest price to lowest price. It also shows the quantity of NZUs bid for at each price.
- 4 These are the current live **Offers** (Sellers), shown from lowest to highest price. It also shows the quantity of NZUs offered at each price.
- 5 If you want to create an offer for the selected product type, then click the 'Offer Entry' Button.

Market depth

2 CP-NZU 

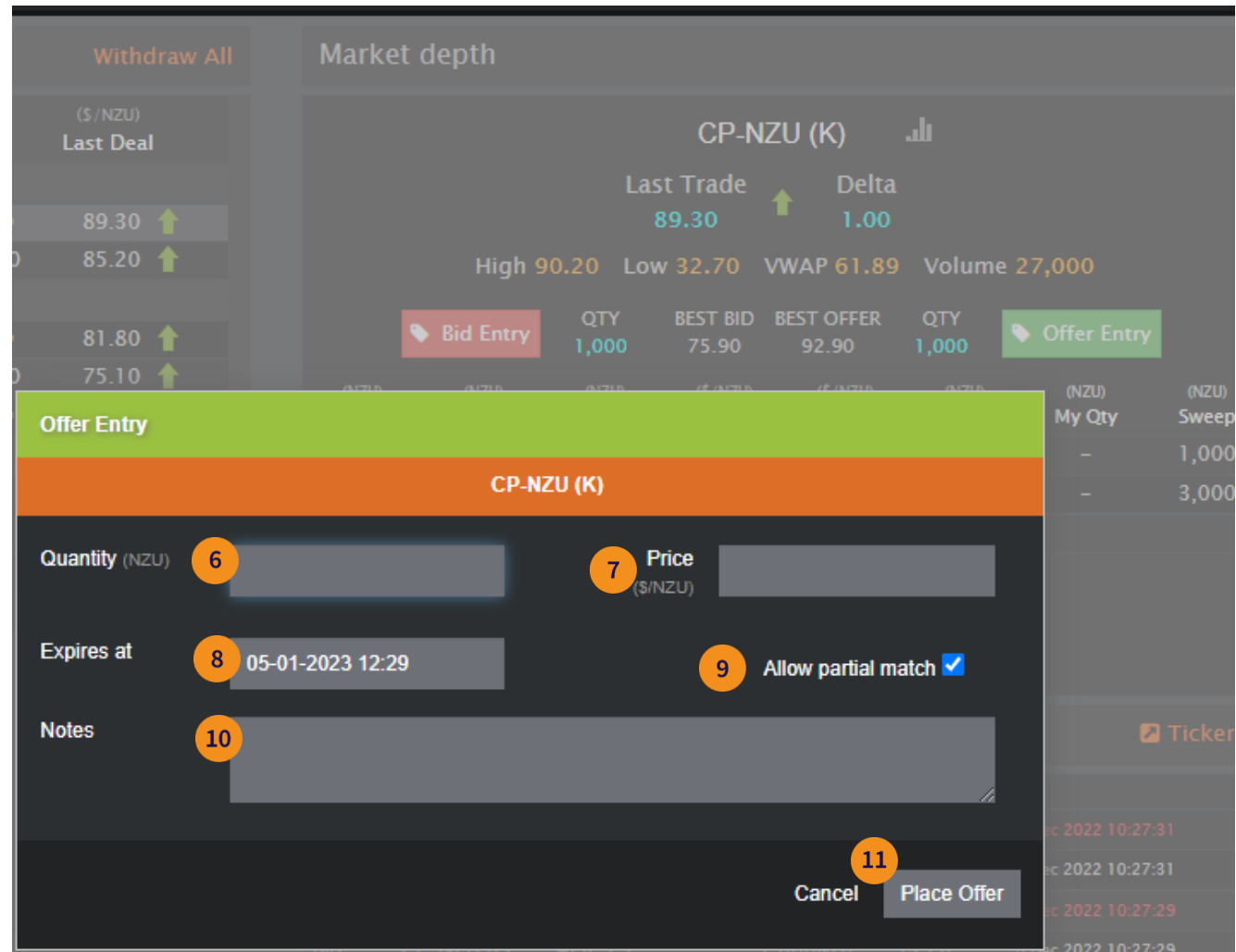
Last Trade 79.00  Delta 3.50

High 85.70 Low 36.20 VWAP 51.83 Volume 25,800

Bid Entry			QTY	BEST BID	BEST OFFER	QTY	Offer Entry	
(NZU) Sweep	(NZU) My Qty	(NZU) Qty	3 (\$/NZU) Bids	4 (\$/NZU) Offers	5	(NZU) Qty	(NZU) My Qty	(NZU) Sweep
700	-	700	85.70	85.20	2,000	-	-	2,000
1,600	-	900	83.70	86.80	500	-	-	2,500
2,600	-	1,000	76.70	88.30	1,000	-	-	3,500
2,900	-	300	61.90	89.60	1,000	-	-	4,500
4,900	-	2,000	57.00	92.40	1,000	-	-	5,500

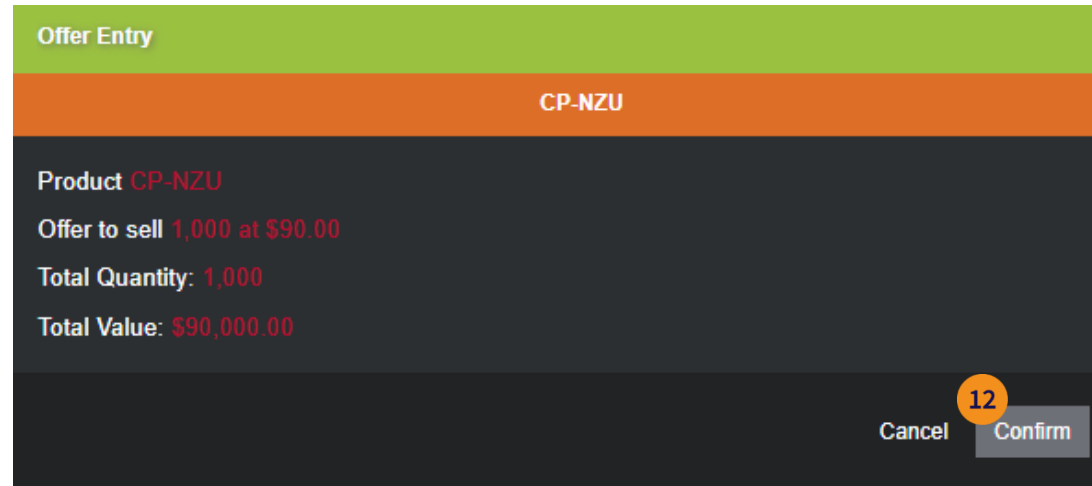
- 6 **Quantity (NZU):** Enter the number of NZUs you want to sell.
- 7 **Price (\$/NZU):** Enter the price at which you want to offer each NZU for.
- 8 **Expires at:** The Offer will automatically expire on this date and time. This field currently defaults to 28 days from the current date. You can override this date and select a date you wish this offer to expire (be withdrawn) instead of the default.
- 9 **Allow partial match:** Tick the box to allow your Offer to be partially matched with a Bid, or untick to require your Offer to be 100% matched / filled.

eg, if you offer 1,000 NZUs for sale and someone bids at a matching price for 700 NZUs, Allow Partial Match will create a trade for 700 NZUs. The unmatched part of the offer (300 NZUs) will remain active until sold or withdrawn.
- 10 **Optional:** You can record notes about the Offer (they can only be seen by users from your organisation).
- 11 Click the **Place Offer** button when you are happy with everything, then



you will be shown a confirmation screen.

- 12 Review the offer details one final time and if correct, click **Confirm** to place your Offer.





- 13 After confirming you will see your offer listed on the market depth panel. This can be easily identified in the **My Qty** (My Quantity) column.

See the other Quick Reference Guides for the following activities

- Withdraw or edit an Offer
- Sending NZUs to Escrow
- Checking your Escrow balance
- Setting Trader Limits

Market depth

CP-NZU 

Last Trade  Delta
 79.00 3.50

High 85.70 Low 36.20 VWAP 51.83 Volume 25,800

 Bid Entry		QTY	BEST BID	BEST OFFER	QTY	 Offer Entry	
(NZU)	(NZU)	(NZU)	(\$/NZU)	(\$/NZU)	(NZU)	(NZU)	(NZU)
Sweep	My Qty	Qty	Bids	Offers	Qty	My Qty	Sweep
700	-	700	85.70	85.20	2,000	-	2,000
1,600	-	900	83.70	86.80	500	-	2,500
2,600	-	1,000	76.70	88.30	1,000	-	3,500
2,900	-	300	61.90	89.60	1,000	-	4,500
4,900	-	2,000	57.00	90.00	1,000	1,000	4,500
				92.40	1,000	-	5,500

13